

# Southwest CSC Overview



Introduction: **Carolyn Enquist**, *Deputy Director*

**Christine Schirmer**, *Outreach & Program Manager*

**Anita Govert**, *Grants Manager*

10:30 **Steve Jackson**, *USGS Director, SW CSC*

10:45 **Kathy Jacobs**, *Director, Center for Climate Adaptation Science & Solutions (CCASS), University of Arizona*

11:00 **Alison Meadow**, *Staff Scientist, CCASS, University of Arizona*

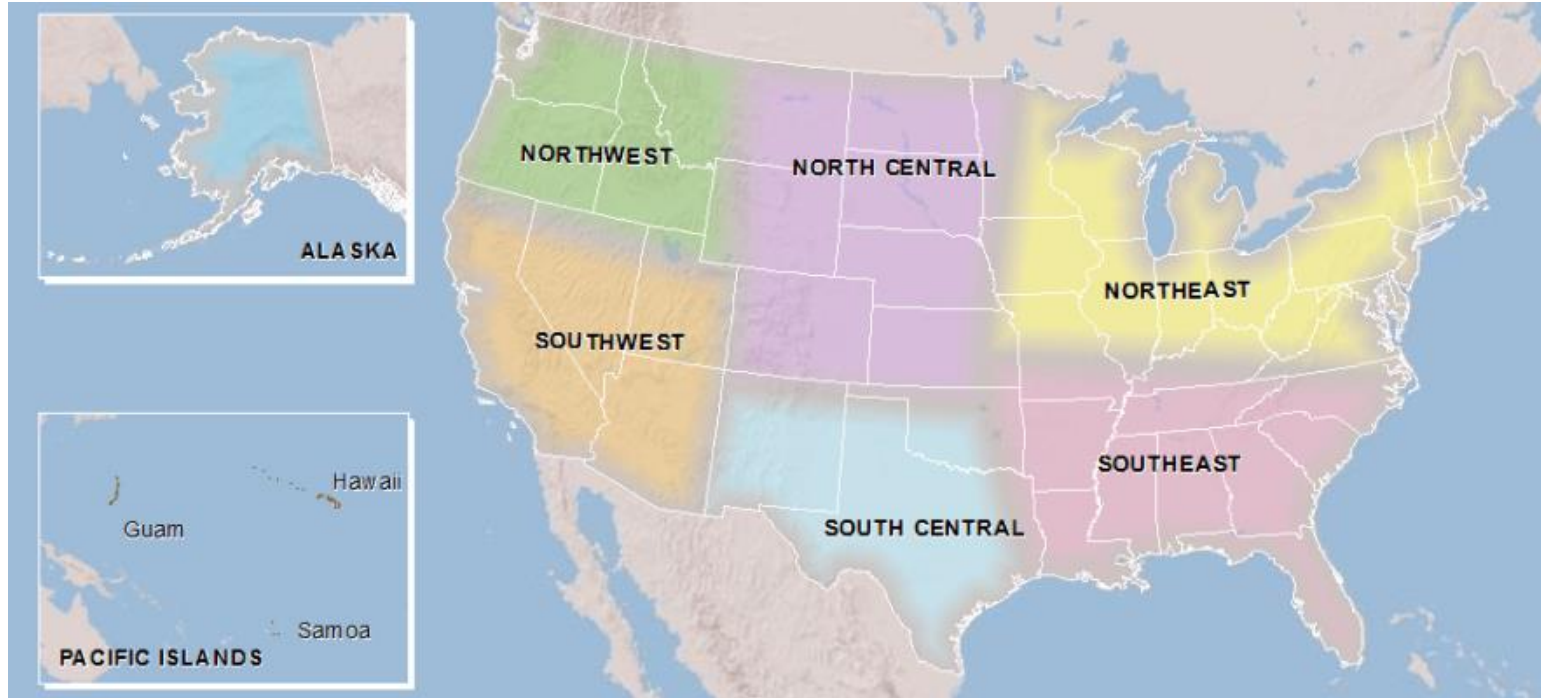
11:15 **Jonathan Overpeck**, *University Director SW CSC, Director Institute of the Environment, University of Arizona*

11:25 Group Discussion





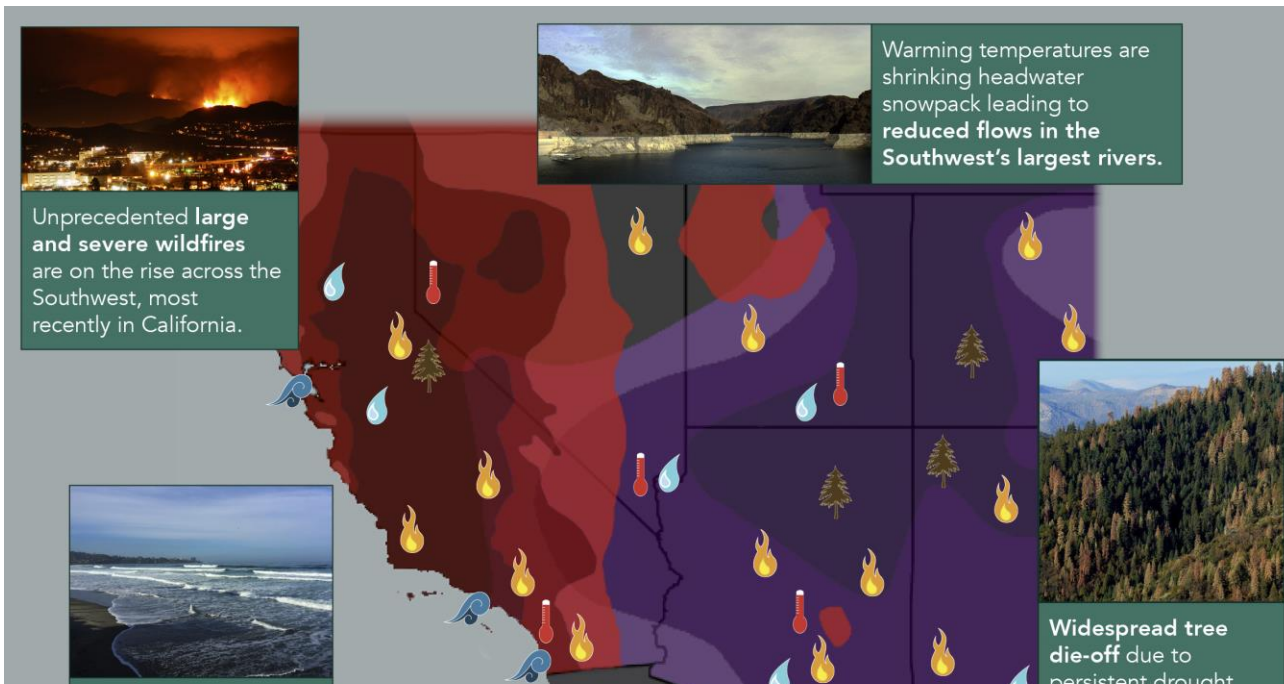
Southwest Climate  
Science Center



8 regional Climate Science Centers established as part of the Department of Interior's "*Plan for a Coordinated, Science-Based Response to Climate Change Impacts*" (**Secretarial Order 3289**).



# What do we know?



Unprecedented **large and severe wildfires** are on the rise across the Southwest, most recently in California.



Warming temperatures are shrinking headwater snowpack leading to **reduced flows in the Southwest's largest rivers.**



**Widespread tree die-off** due to persistent drought first occurred in the Four Corners before spreading across the Southwest, now reaching the forests of California.

## Temperate forest health in an era of emerging megadisturbance

Constance I. Millar<sup>1\*</sup> and Nathan L. Stephenson<sup>2</sup>

...n drought — the longest in ... indicated with icons.